



300 Mbps Wireless USB Adapter



User
manual

Air 2410



7/24 people support
801 100 0911

Table of Contents

Manual Overview
Safety and Maintenance

3	1 INTRODUCTION	4	3 INSTALLATION SETTINGS	6
3	1.1 Main Features	4	3.1 Loading the driver	6
	1.2 Minimum System Requirements	4	3.2 Connecting to the Wireless Network	7
	1.3 Package Contents	4	3.3 Uninstalling the driver	7
	1.4 Applications	5	4 TECHNICAL SPECIFICATIONS	8
2	STATUS LEDS	5	5 PHYSICAL CHARACTERISTICS	8



Manual Overview

This manual guides you through the steps necessary for setting up and configuring your AirTies device. Please read this manual carefully before beginning the installation process.

The Warranty does not cover failure or damage as a result of not following the instructions in the manual. AirTies will not be held responsible in such circumstances.

The User Manual is an important resource you can refer to for safe and proper use of your device. Please retain it for future reference.

Safety and Maintenance

- In order to prevent damage to your device, be sure to keep it in its original box during transportation.
- If you encounter any problems, do not open or disassemble the device. Instead, call AirTies Technical Support at +90 212 444 0239.
- In order to prevent electric shock, do not operate the device in wet or damp areas. Avoid contact with liquids.
- Avoid using the device in dusty environments. If dust buildup should occur, use a dry cloth to remove the dust.
- To clean the exterior of the device use a dry cloth. Do not attempt to clean the interior. There are no user serviceable components inside.
- For information regarding the installation and configuration of the device consult the remainder of this manual.
- Remove all protective plastic on the top and bottom of your device before you start using it.
- The average usage life of the device is 7 years as determined by the Authority of Industry and Trade.

1 INTRODUCTION

The Air 2410 brings wireless freedom to your desktop and laptop computers that do not have wireless capability. With the Air 2410 which uses 11N technology, transfer data, watch videos or upload your pictures to the Internet wirelessly at speeds of up to 300Mbps. Backward compatible with the wireless 802.11b/g devices, the Air 2410 provides 6 times faster wireless communications compared to earlier technologies.

Dead spots and packet losses on your wireless network becomes a thing of the past with the MIMO (Multiple Input Multiple Output) technology and the advanced error recovery system contained in the 802.11n standard. MIMO technology can extend your wireless range up to 4 times.

You can get rid of the clutter of meters of cable that you have to use to connect your computers. Small enough to fit in your pocket, you can install the Air 2410 using the Easy Setup CD and use it anytime, anywhere you want. By connecting the Air 2410 to the USB port, you can bring wireless capability to even your old desktop or laptop PCs.

AirTies Air 2410 is compatible with all 802.11b/g/n access points. It provides fast, uninterrupted data communications at wireless speeds of up to 300 Mbps and USB 2.0 data transfer rates of 480Mbps.

Easy to carry around, you can plug in the Air 2410 to your computer anywhere you like and enjoy the comfort of wireless connectivity.

Using the extension cable provided, you can position your device for best possible reception, thus increasing your access range.

Air 2410 supports the latest encryption standards enabling your computers to connect to the wireless network securely. Configuring wireless security is fast and easy.

The Easy Setup CD and user manual make it easy to install and use the Air 2410 anywhere. All you need to do is to run the Easy Setup CD.

1.1 Main Features

- **Wireless communications at speeds of up to 300Mbps with 802.11N:** Data rates of up to 300 Mbps with 802.11n compatible access points and routers. Backward compatible with 802.11b/g
- **MIMO:** Up to 4 times greater range with Multiple Input Multiple Output antenna architecture
- **USB 2.0:** 480 Mbps USB2.0 technology. Backward compatible with USB1.1
- **Extension cable:** Best positioning for wireless access and fixed usage
- **Easy installation:** Easy setup CD
- **Uninterrupted technical support:** 7/24 AirTies technical support line
- **Extended warranty:** 3 years

1.2 Minimum System Requirements

- A computer that has an USB port and is running any of Win 2000/XP/Vista operating systems.

1.3 Package Contents

1. AirTies Air 2410 300 Mbps Wireless USB Adapter
2. USB extension cable
3. Quick installation guide
4. Warranty card and Certificate of Compliance
5. Easy setup CD



1.4 Applications

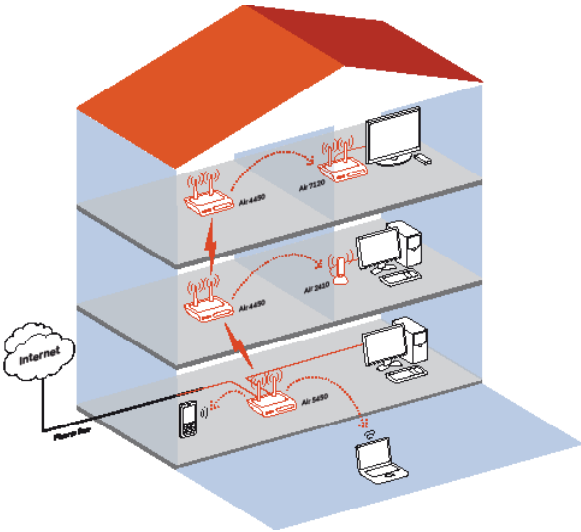
At Home: Freedom to connect to the internet wirelessly from your chair, from any room in the house, or from your porch or garden.

In the Office: Access your company's wireless network from anywhere in the office, any conference room, the break room, etc.

Temporary local area networks (LANs) constructed for special projects

Commercial fairs and shows, construction sites: places where a computer network needs to be setup in a very short time

A practical solution for those home office or small business users that need fast and easy network setup



2 STATUS LEDs

The following table describes the device activity that the LEDs indicate.

LED	LIGHT	STATUS
USB	Green	Connected
	Off	Not connected
Wireless Network	Green (solid)	Connected
	Green (flashing)	Data Exchange
	Off	Not connected

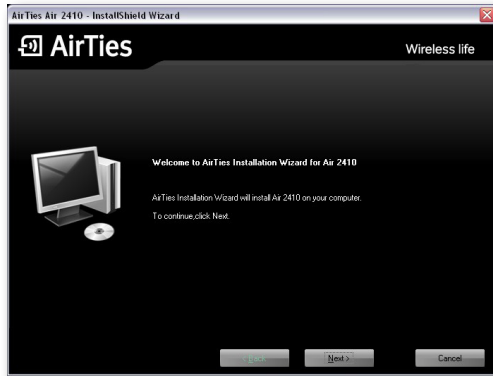
3 INSTALLATION SETTINGS

3.1 Loading the driver

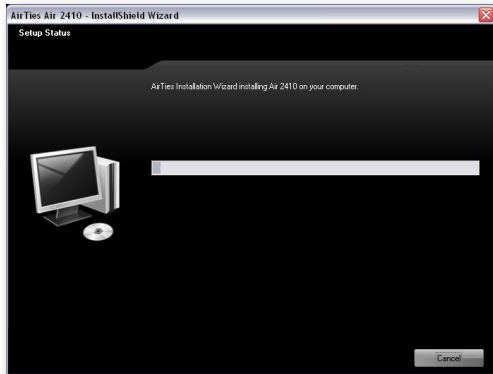
1. Insert the CD provided into the CD drive of your computer. The InstallShield program will start automatically. First, select the installation language.



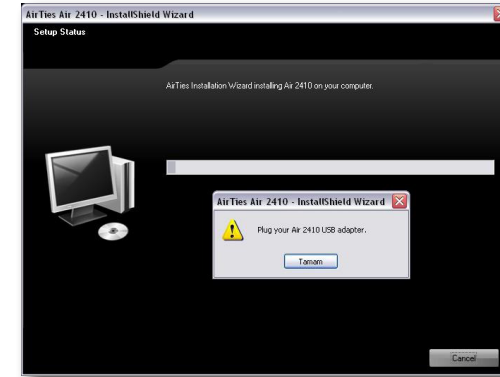
2. Click “Next>” in the window that comes up to proceed with the installation.



3. The installation program will start to load the driver for the Air 2410 Wireless USB Adapter.



4. This may take a few minutes. If you haven't connected the Air 2410, then you will be asked to connect your adapter to the USB port. Click “Continue” to resume the installation process.



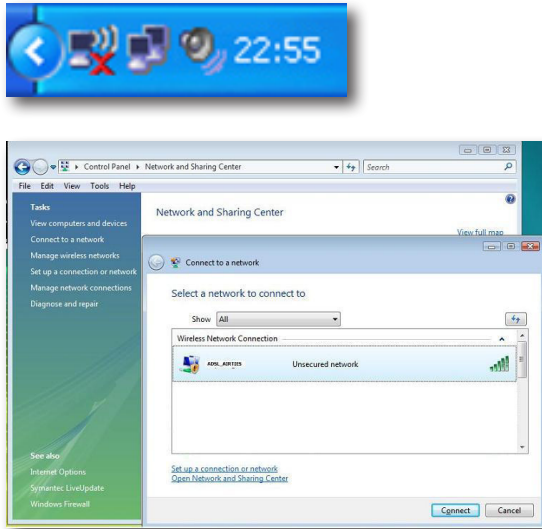
5. When the driver installation is done, the following screen will come up. Click “Finish” to complete the installation.



3.2 Connecting to the Wireless Network

To connect to a wireless network using the Air 2410 Wireless USB adapter, you need to use Windows Zero Config (WZC).

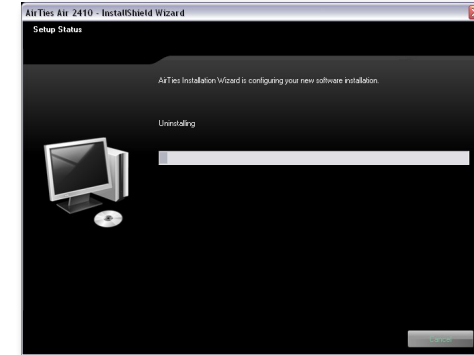
Click on the network adapter icon on the system tray to open the Wireless Configuration Program window.



If the wireless network you would like to connect to is a security enabled network, enter the network key and click "Connect".

3.3 Uninstalling the driver

Go to **Start->Programs->AirTies**. Here, you will find the shortcut for uninstalling the driver for the Air 2410 USB adapter. When you click on this shortcut, the following screen will come up.



Click "**Yes**" to remove all the Air 2410 drivers from your computer.

If you have not connected the Air 2410 to your computer before you start the installation process, after the driver is loaded, you will be prompted to insert the Air 2410 for the installation to be completed.

4 TECHNICAL SPECIFICATIONS

- **Wireless Standards:** IEEE 802.11n, IEEE 802.11g, IEEE 802.11b
- **Wireless Data Rates (Mbps):** 1, 2, 5.5, 6, 9, 11, 12, 24, 36, 48, 54, 72, 144, 150, 300 Mbps (automatic speed adjustment)
- **Frequency Interval:** ETSI 2400 MHz(min) - 2483.5 MHz(max) (13 channels - 3 non-overlapping)
- **Maximum Transmit Power:** 16 dBm EIRP
- **Connection and wireless activity LEDs**
- **Wireless Security:** WPA2, WPA, WEP, and 802.1x support
- **Low Power Consumption Mode**
- **WMM (Wireless Multi Media)** support
- **DPT (Direct Packet Transmission) feature:** full speed data exchange between clients without an access point
- **Class 2 device**

5 PHYSICAL CHARACTERISTICS

- **Dimensions:** 73 mm x 25.5 mm x 10.5 mm
- **Weight:** 15.81 grams
- **Power:** Over USB port
- **Operating Temperatures:** 0°C ~ 40°C
- **Storage Temperature:** -20°C ~ 70°C
- **Humidity:** %5 ~ %90 non-condensing



Easy setup CD



Three year warranty



7/24 people support
801 100 0911